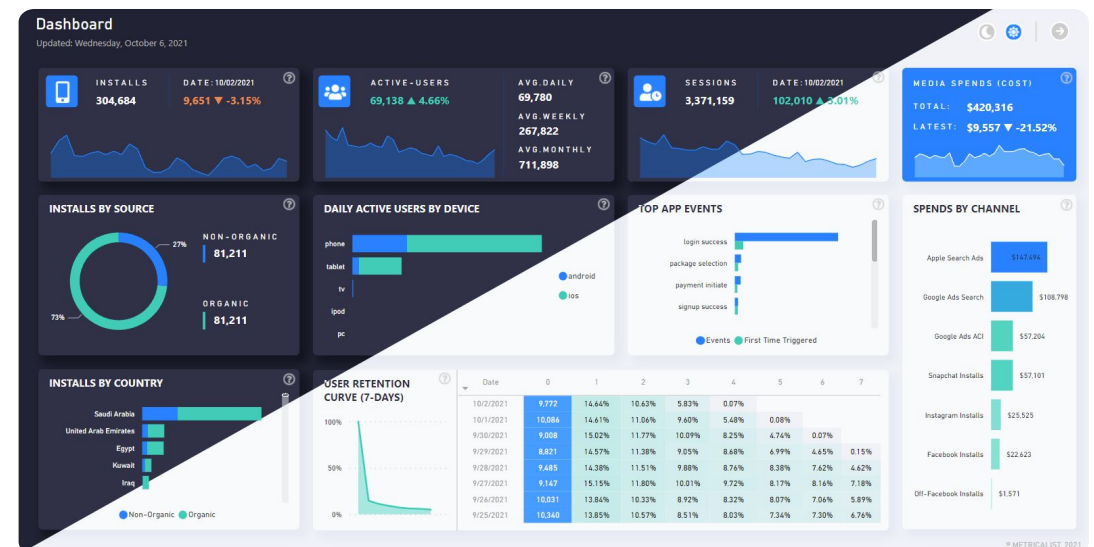


# Power BI Course

By Mohamed Abdelfattah



# Course Objective



You'll learn all of the features in power BI that allow you to explore, experiment with, fix, prepare, and present data easily, quickly and beautifully.



# Power Bi Course Content

---

- Design Interactive Power BI Reports
- Connect & Transform the Raw Data
- Build a Relational Data Model
- DAX

# Design Interactive Power BI Reports

- Intro to the Power BI Report View
- Adding Basic Charts to Power BI Reports
- Formatting & Filtering Options
- Matrix Visuals
- Slicers & Timelines & Filter
- Cards & KPIs
- Power BI Map Visuals (Basic, Fill, ArcGIS)
- Treemaps, Lines, Areas & Gauges
- Editing Report interactions
- Adding Drillthrough Filters
- Linking to Report Bookmarks
- Using "What-If" Parameters
- PREVIEW: Publishing to Power BI Service
- Power BI Data Viz Best Practices



# Connect & Transform the Raw Data

- Import data from various external sources, folders & Excel workbooks, websites, Database (access)
- Dealing with power query editor
- Intro to the Power BI Query Editor
- Types of Power BI Data Connectors
- Basic Table Transformations
- Text, Number & Date Tools
- Index & Conditional Columns
- Grouping & Aggregating Data
- Pivoting & Unpivoting
- Modifying, Merging & Appending Queries
- Connecting to Folders
- Defining Hierarchies & Categories
- Query Editing & Power BI Best Practices



# Build a Relational Data Model & DAX

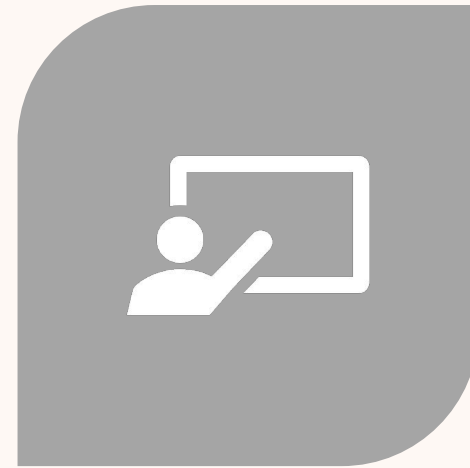
- Creating Power BI Table Relationships
- Connecting Multiple Data Tables
- Intro to Data Analysis Expressions (DAX)
- Calculated Columns vs. Measures
- Common Power BI Functions
- Basic Date & Time Formulas
- Logical & Conditional Statements
- Text, Math & Stats Functions
- CALCULATE, ALL & FILTER Functions
- DAX Iterators (SUMX, AVERAGEX)



# Course Information



DURATION : 20 TRAINING  
HOURS



PRACTICAL ASSIGNMENT IN  
SESSIONS

Thank  
You